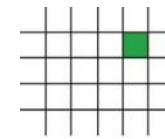


kompetent • innovativ • verantwortungsbewusst



INGENIEURTEAM STUDIO DI INGEGNERIA

BERGMEISTER



Energiebericht 2011 Gemeinde Klausen

13.03.2013

Inhaltsübersicht

Gesamtüberblick

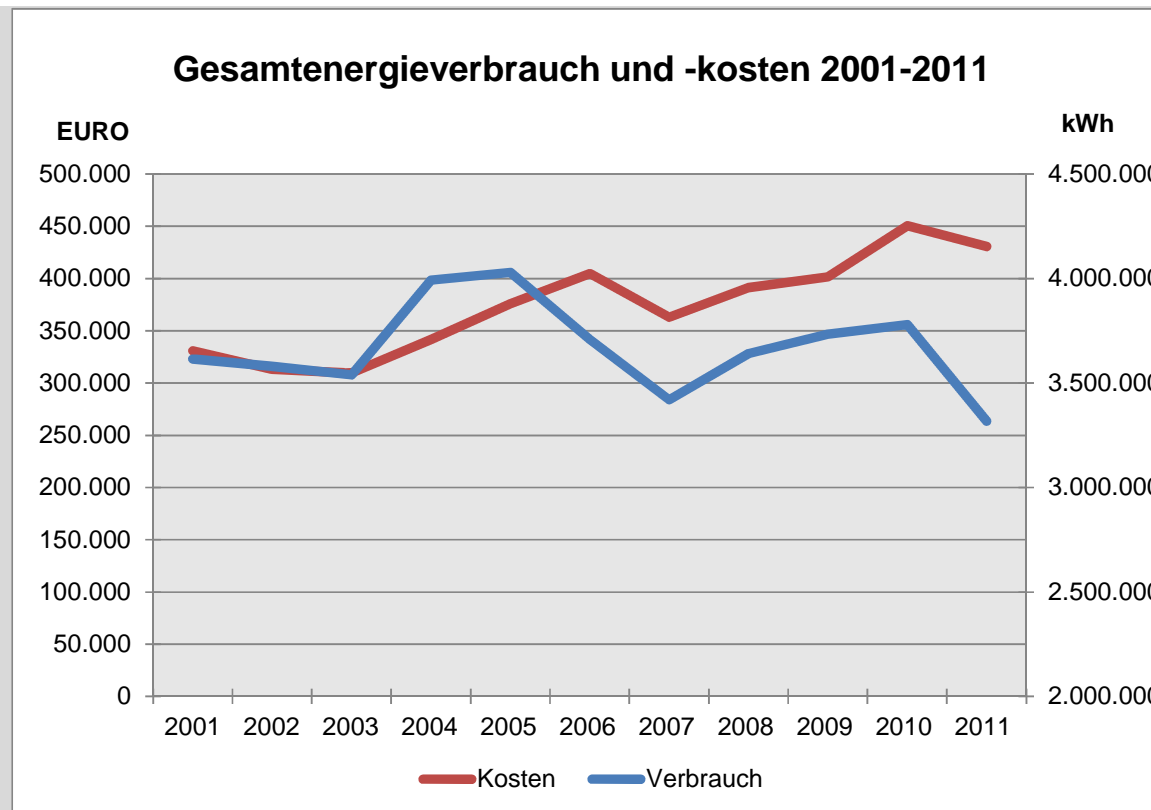
Heizung

Strom

Diskussion

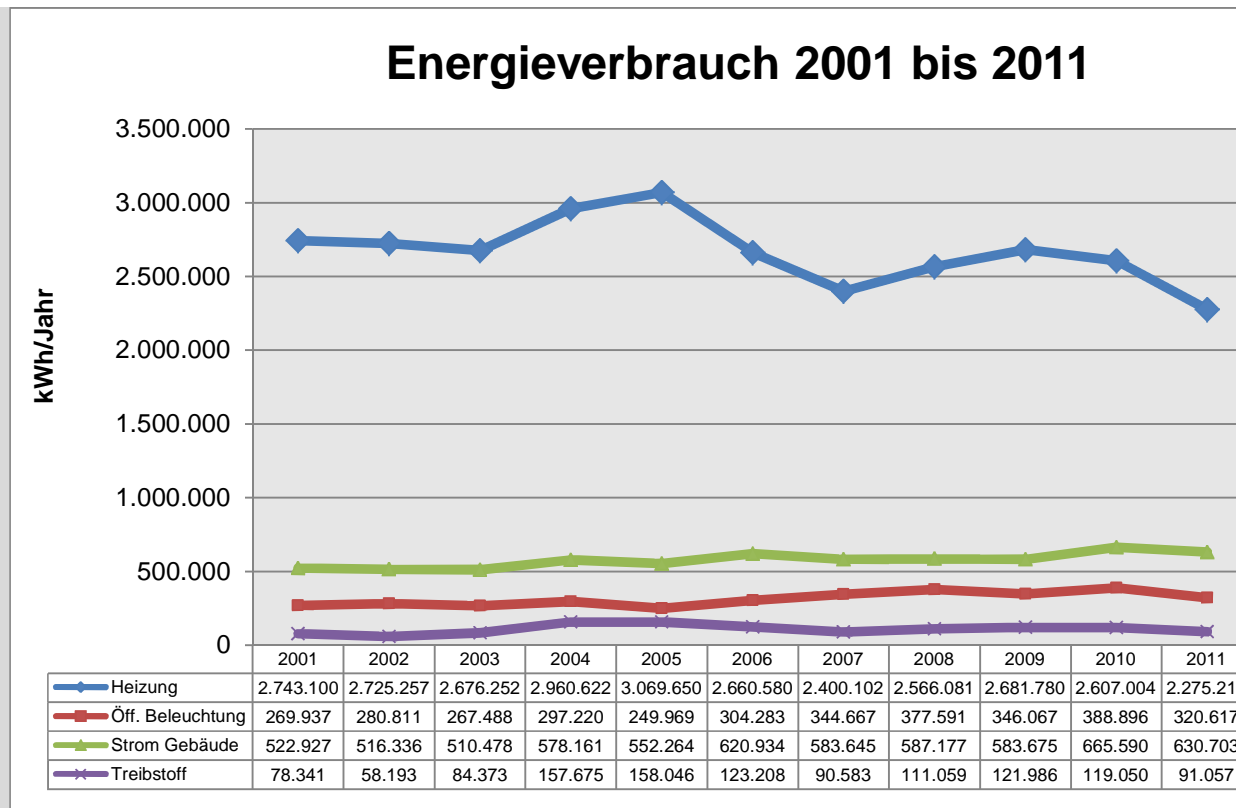
Energiebericht

Gesamtüberblick



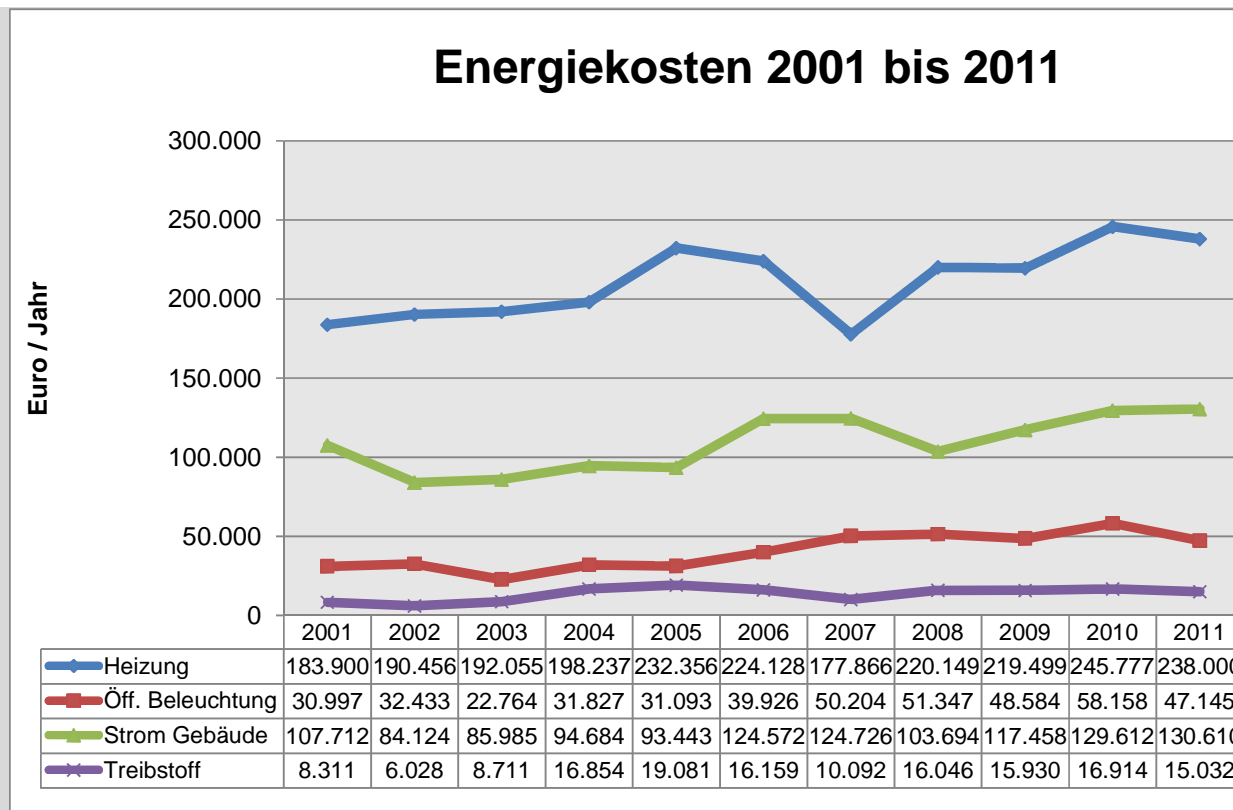
Energiebericht

Gesamtüberblick

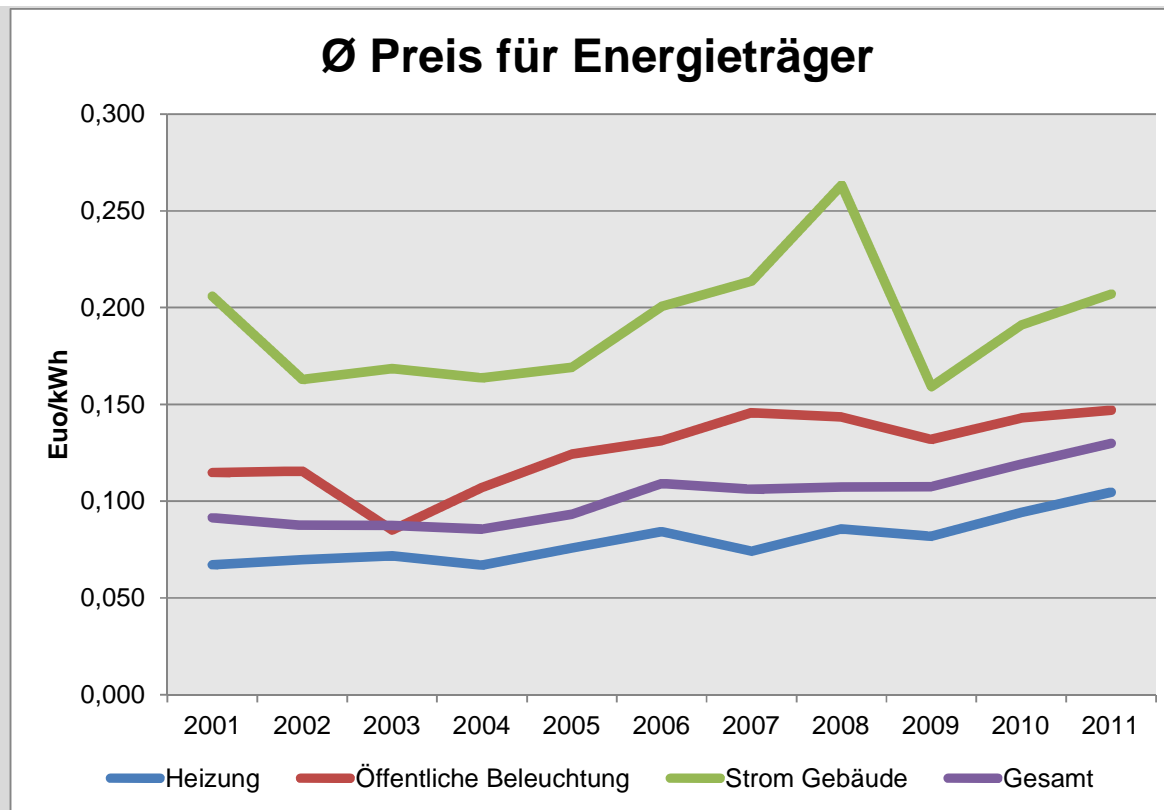


Energiebericht

Gesamtüberblick



Energiebericht



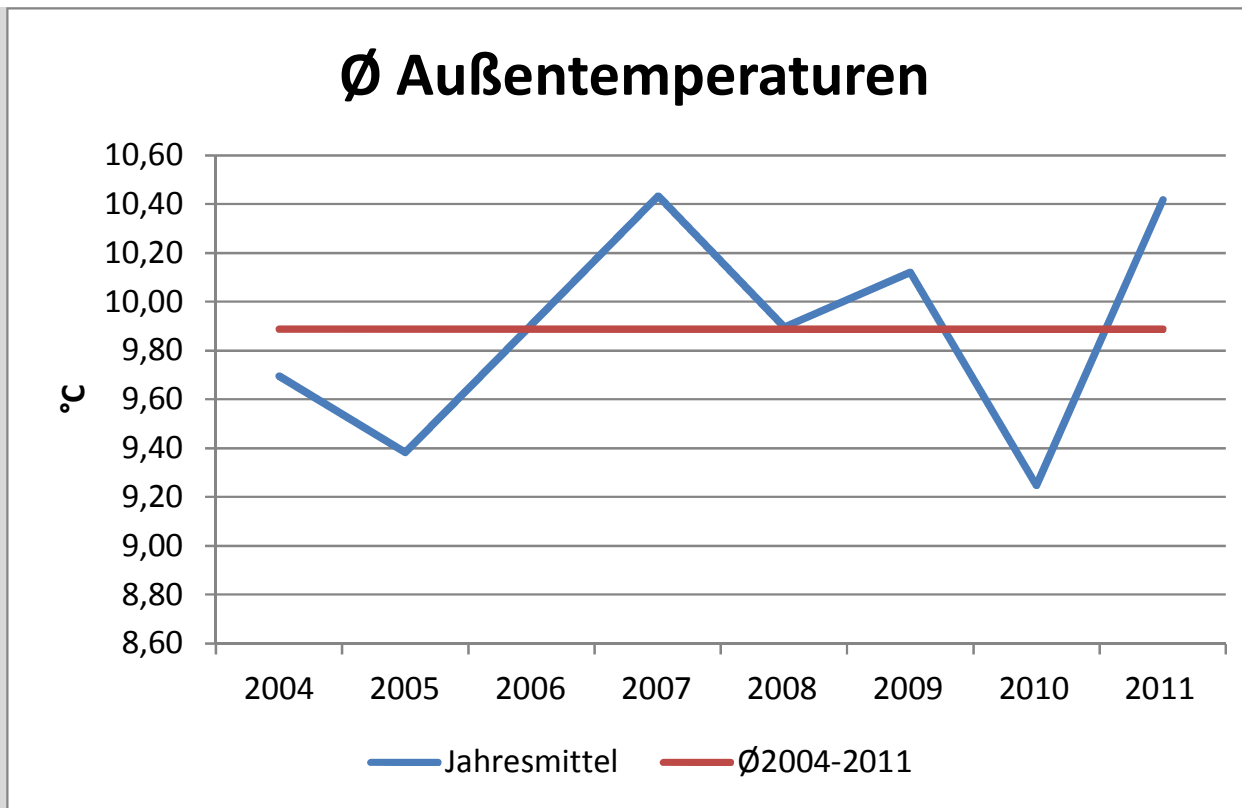
Energiebericht

Heizung



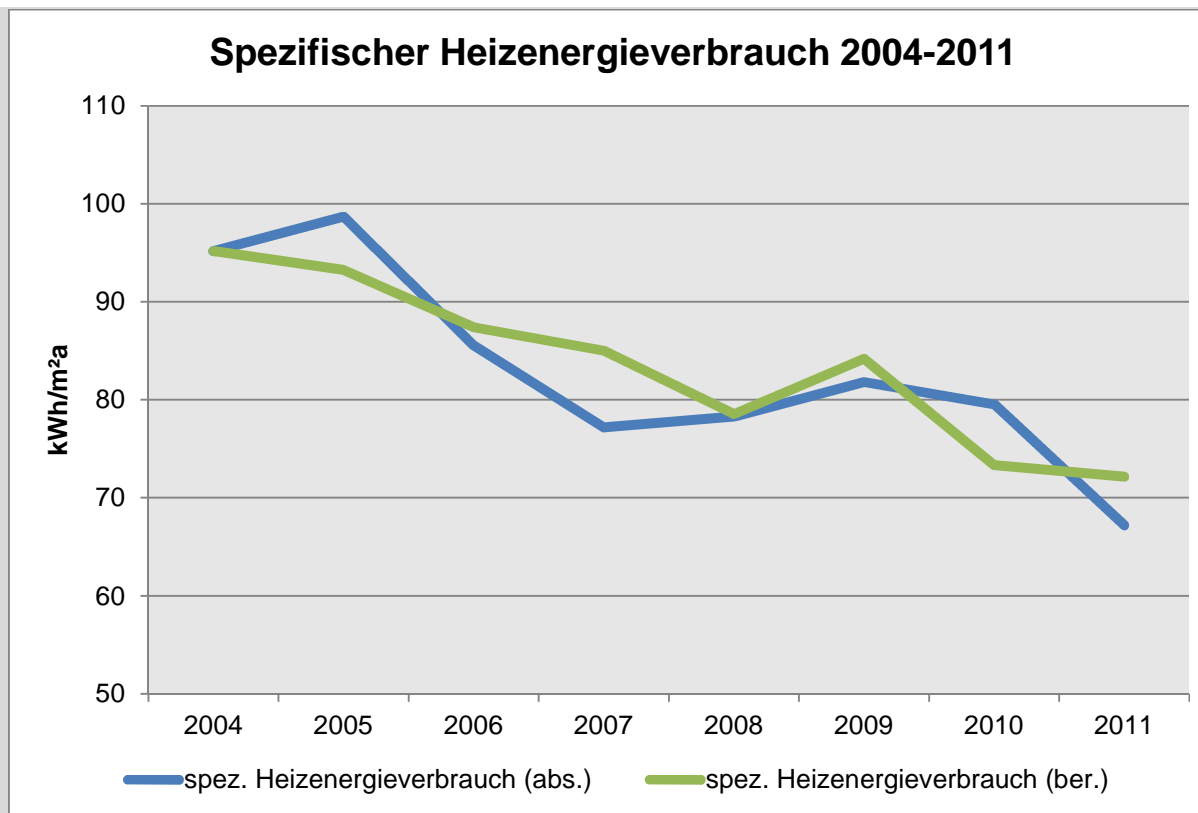
Energiebericht

Heizung



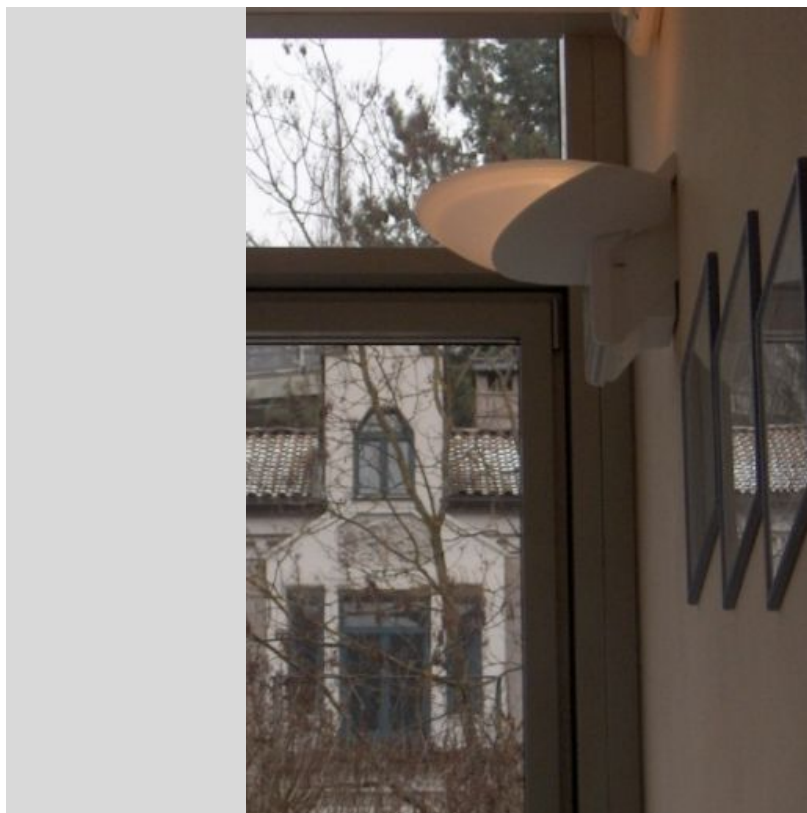
Energiebericht

Heizung



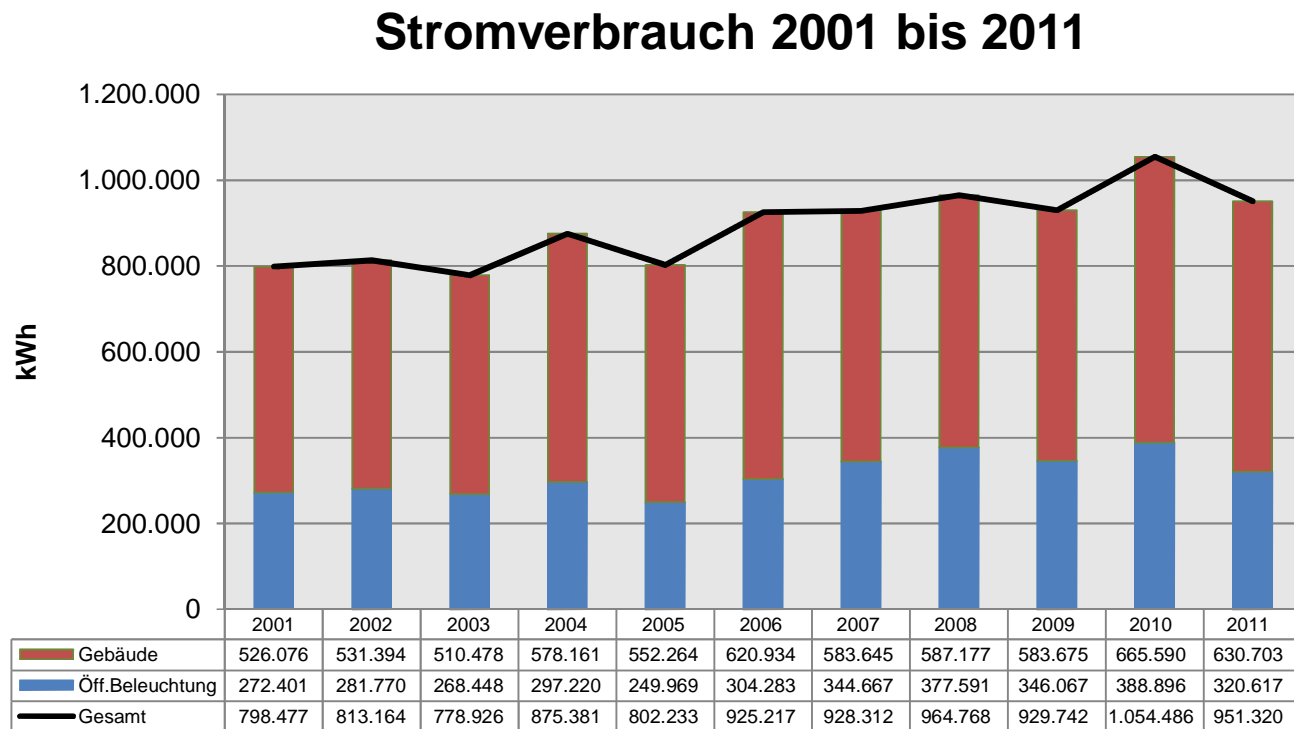
Energiebericht

Strom



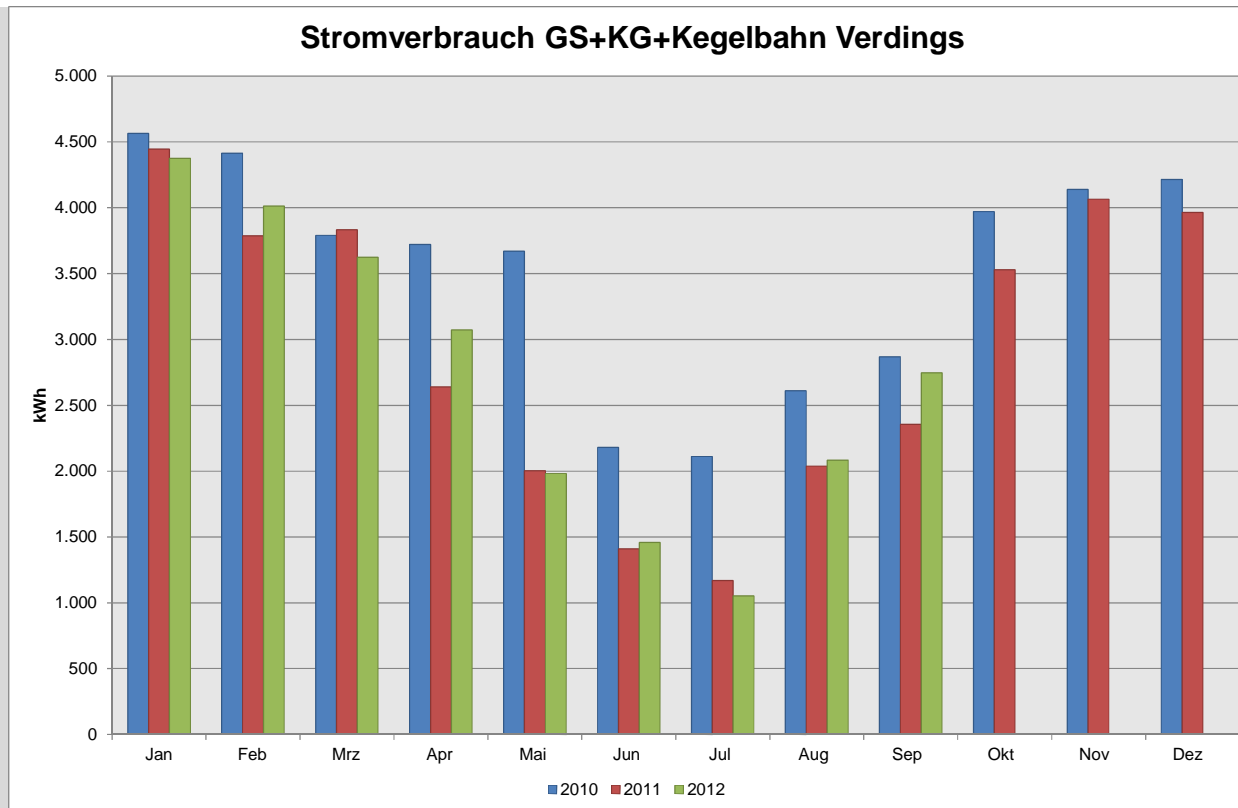
Energiebericht

Strom



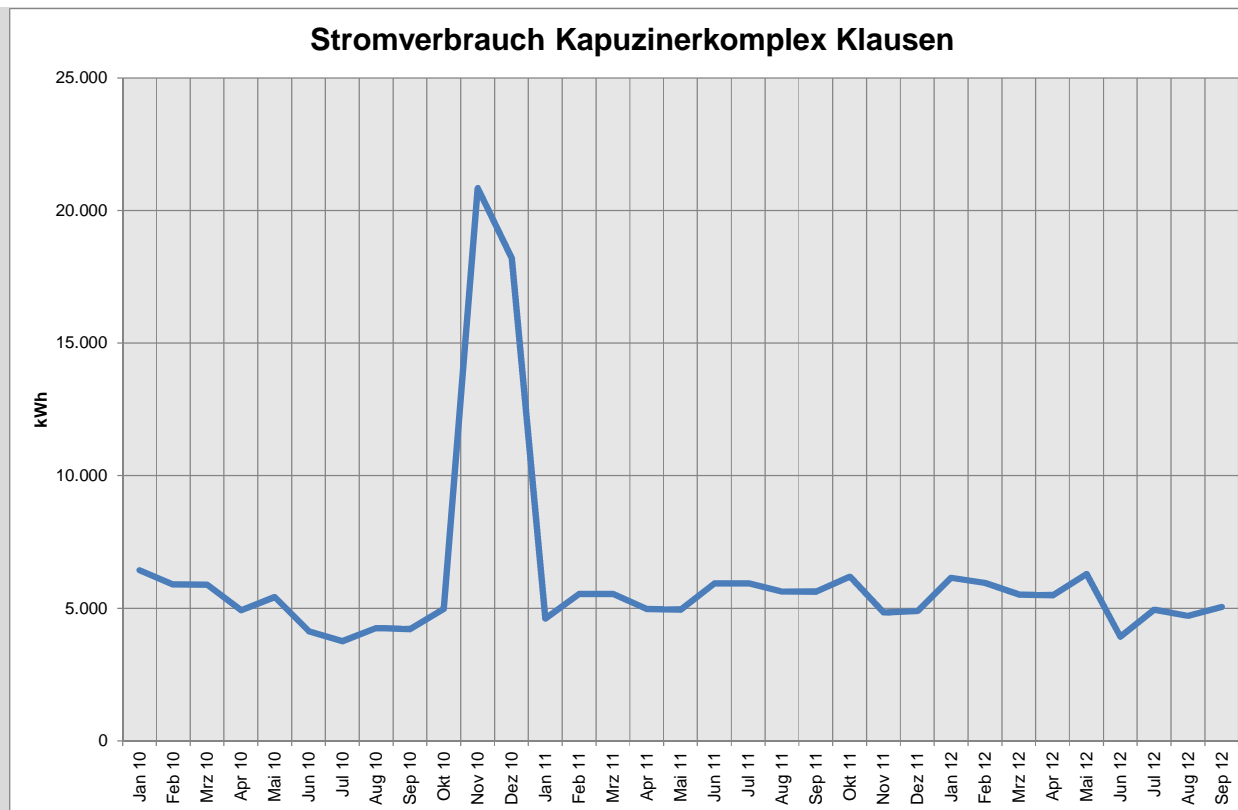
Energiebericht

Strom – Bsp.



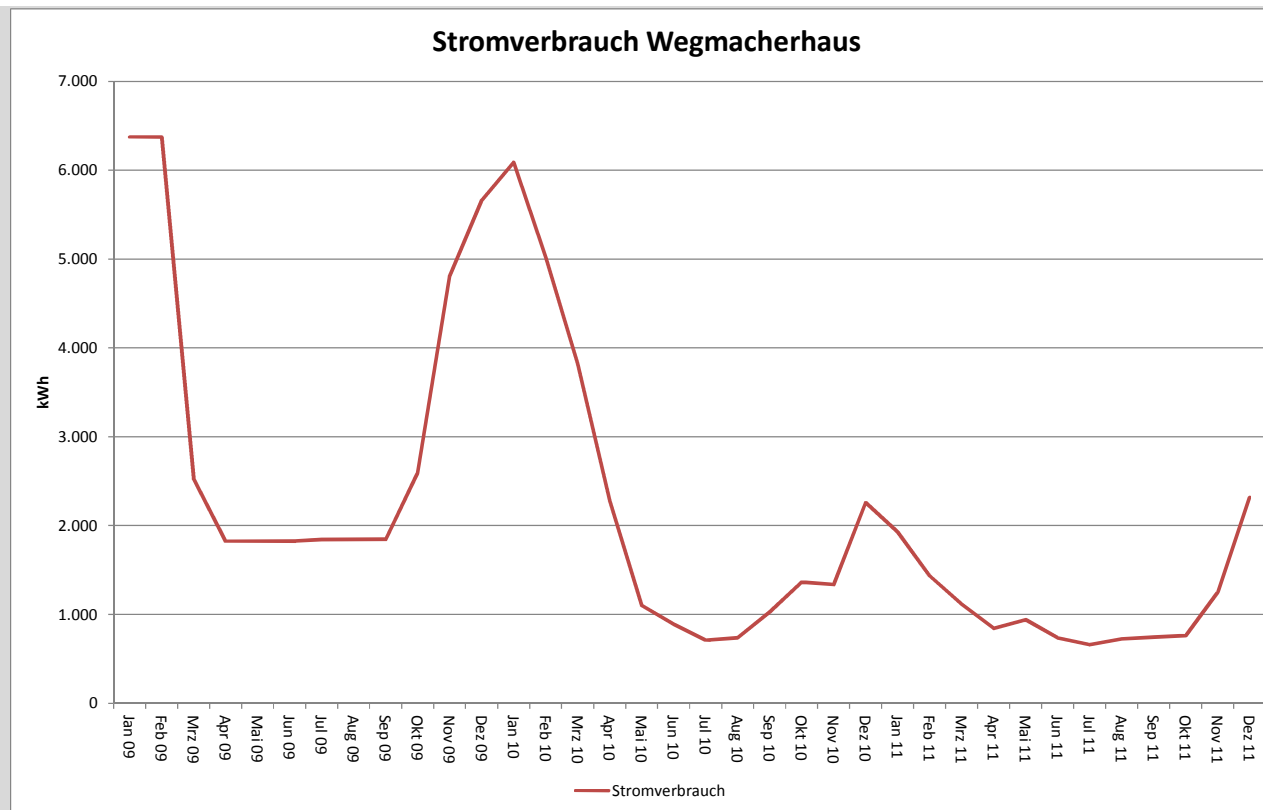
Energiebericht

Strom – Bsp.



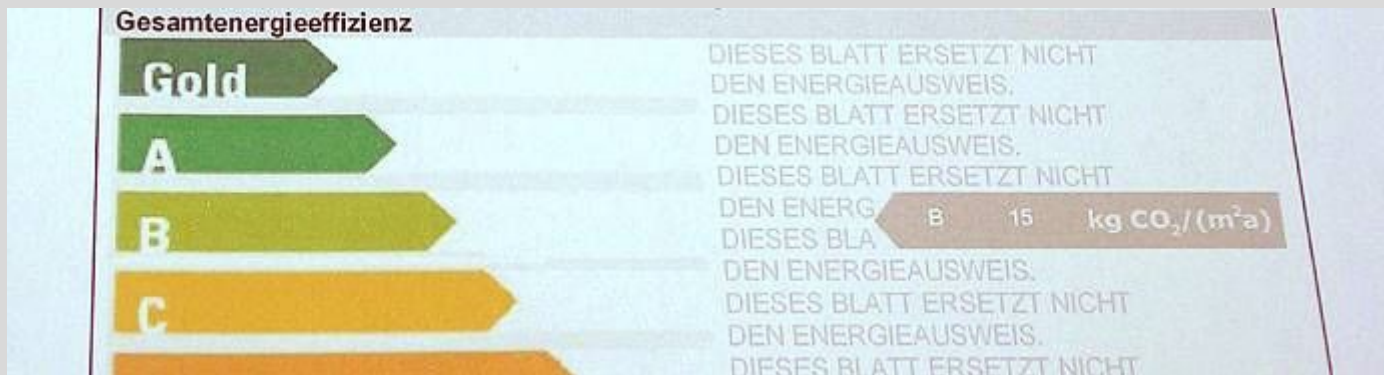
Energiebericht

Strom – Bsp.



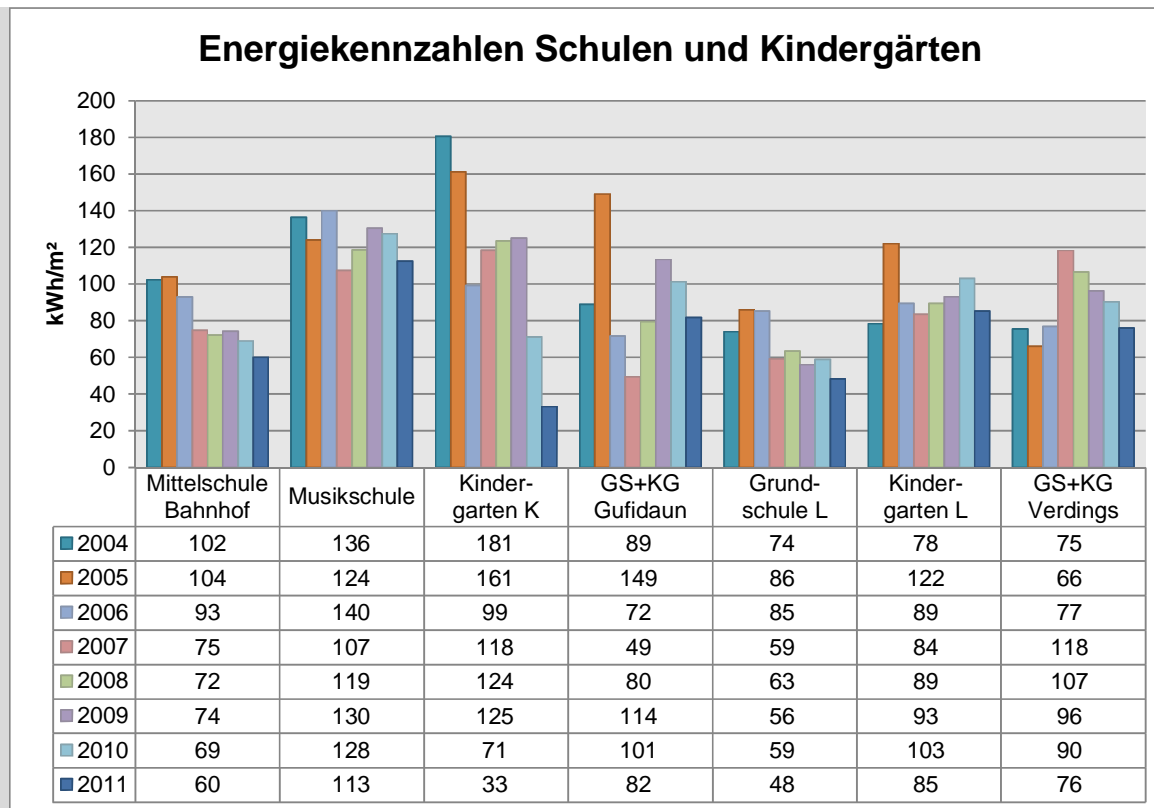
Energiebericht

Kennzahlen



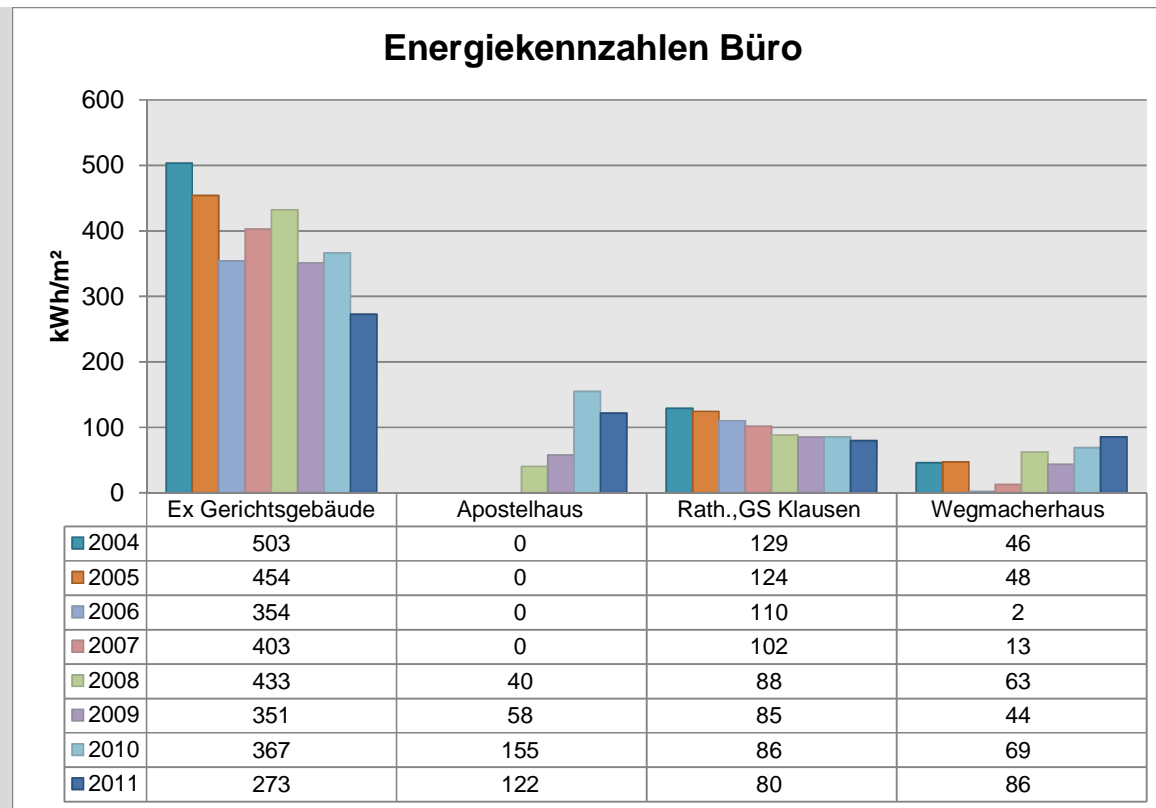
Energiebericht

Energiekennzahl



Energiebericht

Energiekennzahl

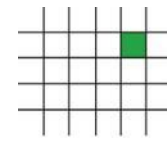


Energiebericht

Ausblick

- Neubau/Sanierung
 - Kontrolle Ausschreibungen
 - Baubegleitung
- Schulungen – Informationsabende
- Anpassung der Heizzeiten an die Nutzung des Gebäudes
- Temperaturmessungen

kompetent • innovativ • verantwortungsbewusst



INGENIEURTEAM STUDIO DI INGEGNERIA

BERGMEISTER



Diskussion